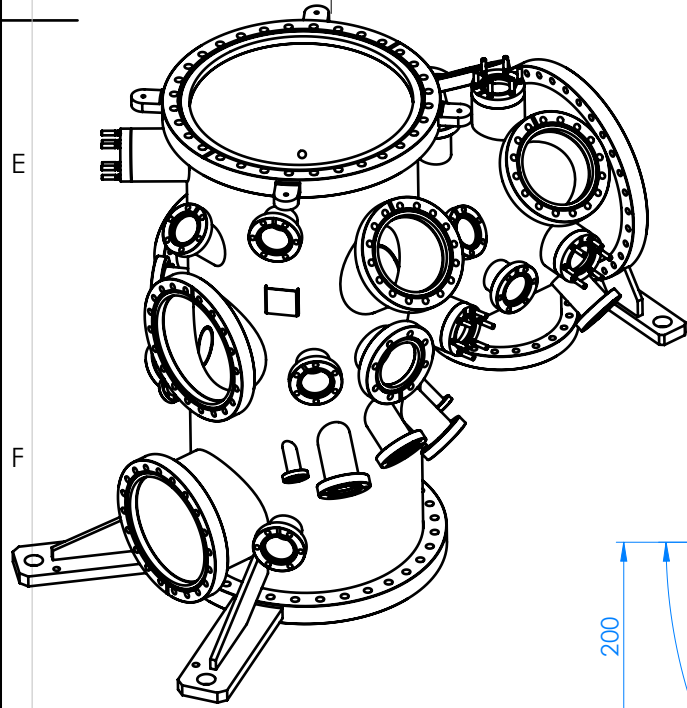
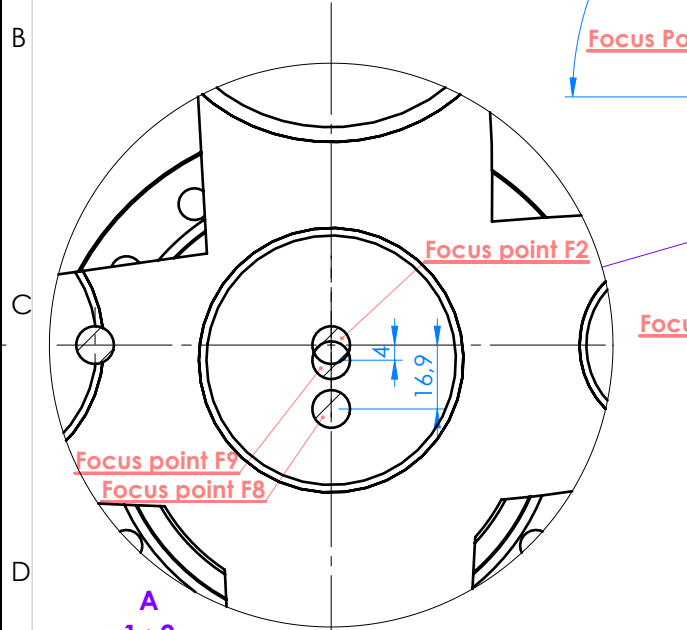


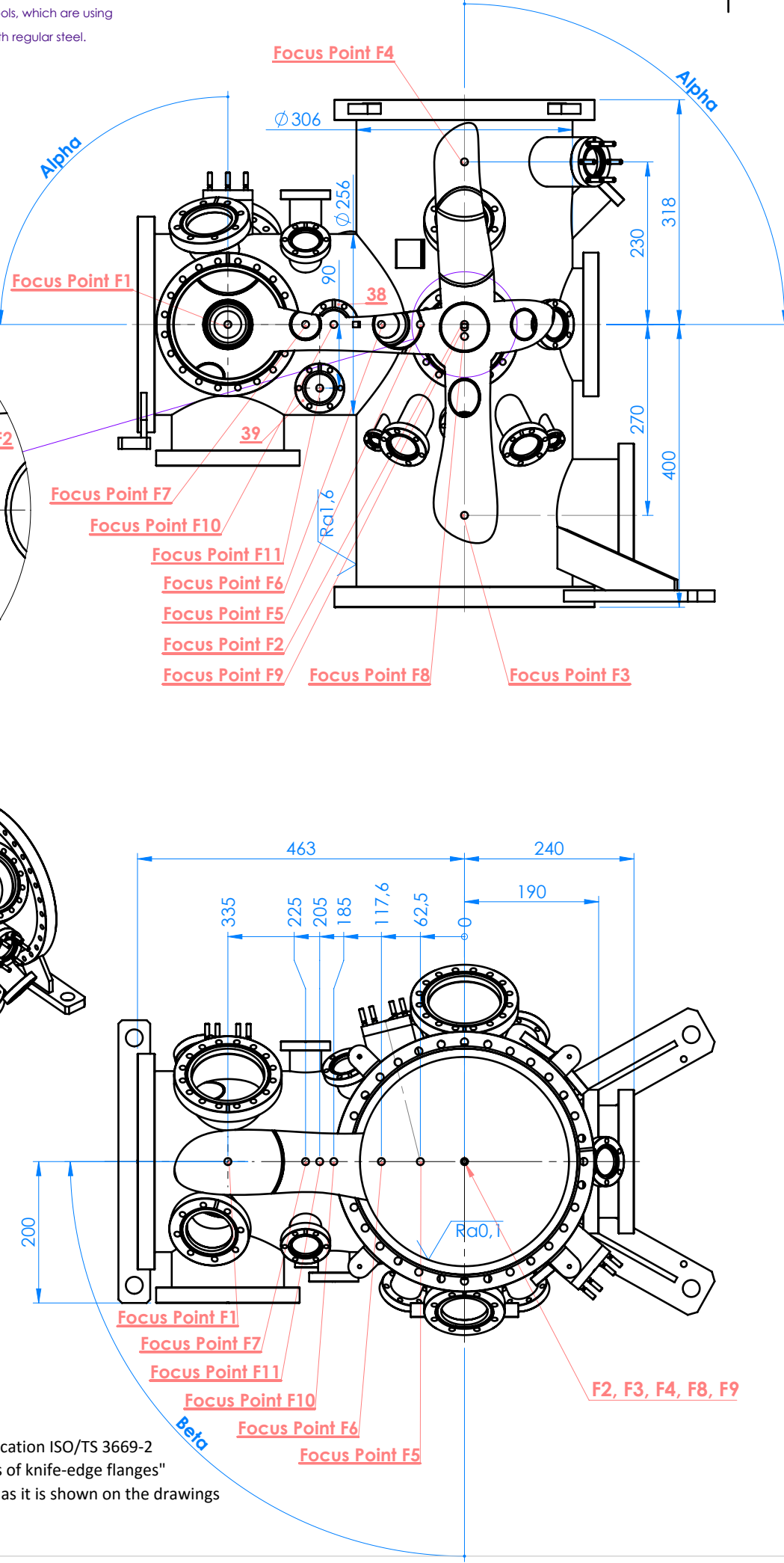
ATTENTION - STAINLESS STEEL only
Manufacturing and assembling process have to be made without tools, which are using
for regular steel (carbon steel) manufacturing.
Raw material and finished parts have to be store without contact with regular steel.



Ra 0,1 (✓)



ATTENTION:
- Use CF flanges geoemtry according Technical Specification ISO/TS 3669-2
"Vacuum Technology - Bakable Flanges - Dimensions of knife-edge flanges"
- Keep orientation of wholes of non rotatable flanges as it is shown on the drawings
- Leak-proof <1x10⁻¹⁰ [mbar x l / s]
- Leak testing with a dry pump system only!



57	Focus Point F11								1
56	Focus Point F10								1
55	Focus Point F9								1
54	Focus Point F8								1
53	Focus Point F7								1
52	Focus Point F6								1
51	Focus Point F5								1
50	Focus Point F2								1
49	Focus Point F4								1
48	Focus Point F3								1
47	Focus Point F1								1
39	Port DN 40CF - gas dosing	44,5x2	Focus Point F11	40	90	0	150	-	
38	Port DN 40CF - gas dosing	44,5x2	Focus Point F10	40	90	0	170	-	
37	Port DN 40CF - residual gas analyser	44,5x2	Focus Point F4	40	90	230	200	-	
36	Port DN 40CF - burst disc	44,5x2	Focus Point F3	40	90	230	200	-	
35	Port DN 40CF - spare	44,5x2	Focus Point F7	40	90	180	170	-	
34	Port DN 40CF - spare	44,5x2	Focus Point F2	40	45	270	285	-	
33	Port DN 63 CF - viewport	70x2	Focus Point F2	63	55	0	260	-	
32	Port DN 40CF - sputter source	44,5x2	Focus Point F2	40	125	0	250	rotatable flange	
31	Port DN 40CF - wobble stick	70x2	Focus Point F5	40	90	166	205	threaded holes	
30	Port DN 16CF - shutter	18x1	-	16	as port 25	as port 25	as port 25 -30mm	shift 60mm to port 25	
29	Port DN 16CF - shutter	18x1	-	16	as port 24	as port 24	as port 24 -30mm	shift 60mm to port 24	
28	Port DN 16CF - shutter	18x1	-	16	as port 23	as port 23	as port 23 -30mm	shift 60mm to port 23	
27	Port DN 16CF - shutter	18x1	-	16	as port 22	as port 22	as port 22 -30mm	shift 60mm to port 22	
26	Port DN 63 CF - RHEED Source	70x2	Focus point F9	63	90	180	200	-	
25	Port DN 40CF - evaporation source	44,5x2	Focus Point F2	40	130	155	270	-	
24	Port DN 40CF - evaporation source	44,5x2	Focus Point F2	40	130	205	270	-	
23	Port DN 40CF - evaporation source	44,5x2	Focus Point F2	40	130	335	270	-	
22	Port DN 40CF - evaporation source	44,5x2	Focus Point F2	40	130	25	270	-	
21	Port DN 40CF - vacuum gauge	70x2	Focus Point F4	40	90	310	240	threaded holes	
20	Port DN 40CF - quartz balance	44,5x2	Focus Point F2	40	90	215	200	-	
19	Port DN 40CF - spare	44,5x2	Focus Point F2	40	90	320	200	-	
18	Port DN 40CF - sputter source	44,5x2	Focus Point F2	40	125	180	250	rotatable flange	
17	Port DN 40CF - spare	44,5x2	Focus Point F1	40	125	165	200	-	
16	Port DN 40CF - spare	44,5x2	Focus Point F6	40	55	160	180	-	
15	Port DN 40CF - gas dosing	44,5x2	Focus Point F7	40	45	0	170	-	
14	Port DN 40CF - spare	44,5x2	Focus Point F7	40	0	0	190	-	
13	Port DN 40CF - spare	70x2	Focus Point F1	40	0	0	190	threaded holes	
12	Port DN 100CF - viewport	108x3	Focus Point F1	100	45	180	175	-	
11	Port DN 250CF - RDC	256x3	-	250	90	90	-	-	
10	Port DN 63 CF - viewport	70x2	Focus Point F1	63	35	15	180	-	
9	Port DN 40CF - wobble stick	70x2	Focus Point F1	40	90	180	170	threaded holes	
8	Port DN 100CF - viewport	108x3	Focus Point F2	100	50	180	300	-	
7	Port DN 100CF - RHEED Screen	108x3	Focus Point F8	100	90	0	220	-	
6	Port DN 160CF - pumping system	159x3	Focus Point F3	160	90	270	240	-	
5	Port DN 160CF - spare	159x3	Focus Point F1	160	180	0	200	rotatable flange	
4	Port DN 160CF - leed	159x3	Focus Point F1	160	90	0	200	-	
3	Port DN 160CF - manipulator	159x3	Focus Point F2	160	90	270	190	-	
2	Port DN 300CF - bottom flange	306x5	-	300	180	-	-	-	
1	Port DN 300CF - top flange	306x5	-	300	0	-	-	-	
No	Port name/description	Port_tube_size	Focus point	DN CF	Alpha [deg]	Beta [deg]	Lo [mm]	Comment	

Manufacturing processes and cleanlines must be such that the component/assembly is supplied suitable for use in UHV systems

PREVAC standard surface finish:
01 wew. - 04 zew.

DIMENSIONS ARE IN MILLIMETERS
General tolerances:
ISO 2768-FH / ISO 13920-AE

+0.3
+0.1
-0.1
-0.3

Responsible M.Tkocz

DRW. Author M.Tkocz 10.03.2016

Checking and approval of the document is in accordance with given template in the MRP system.

The reproduction, distribution and utilization of this document as well as the communication of its contents, to others without explicit authorization is prohibited.

Old number: -

Title:
Chamber OD306x5 39xCF
PL: Komora OD306x5 39xCF

Material:

-

Weight:

78713.88 [g]

Type of item:

PROD



PREVAC sp. z o.o.
ul. Raciborska 61 44362 Rogow
tel. +48 324592000 fax. +48 324592001

A3

Scale: 1:8

Drawing number:

1043466

Revision:

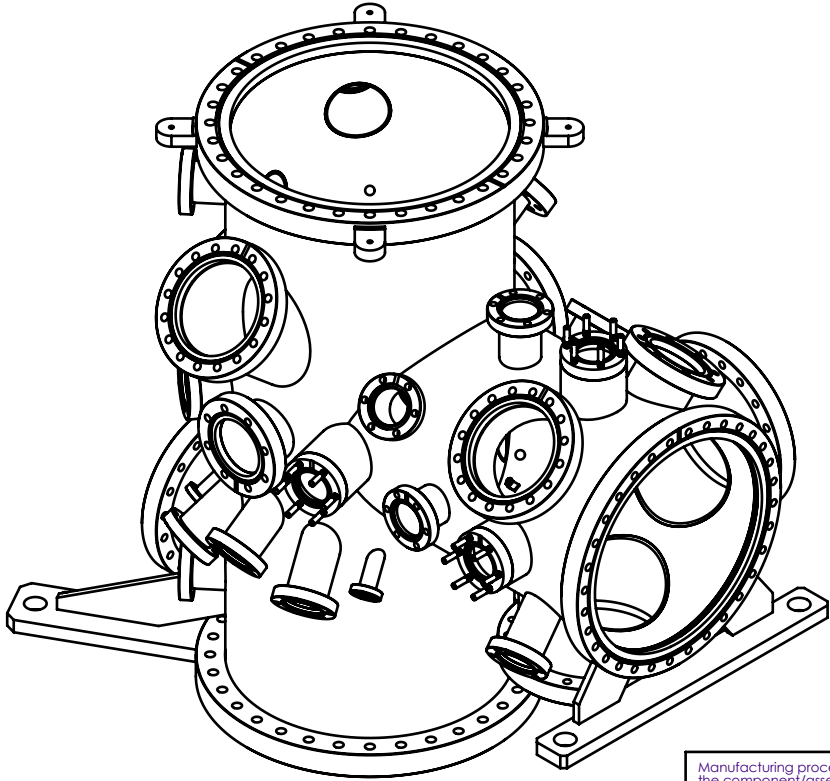
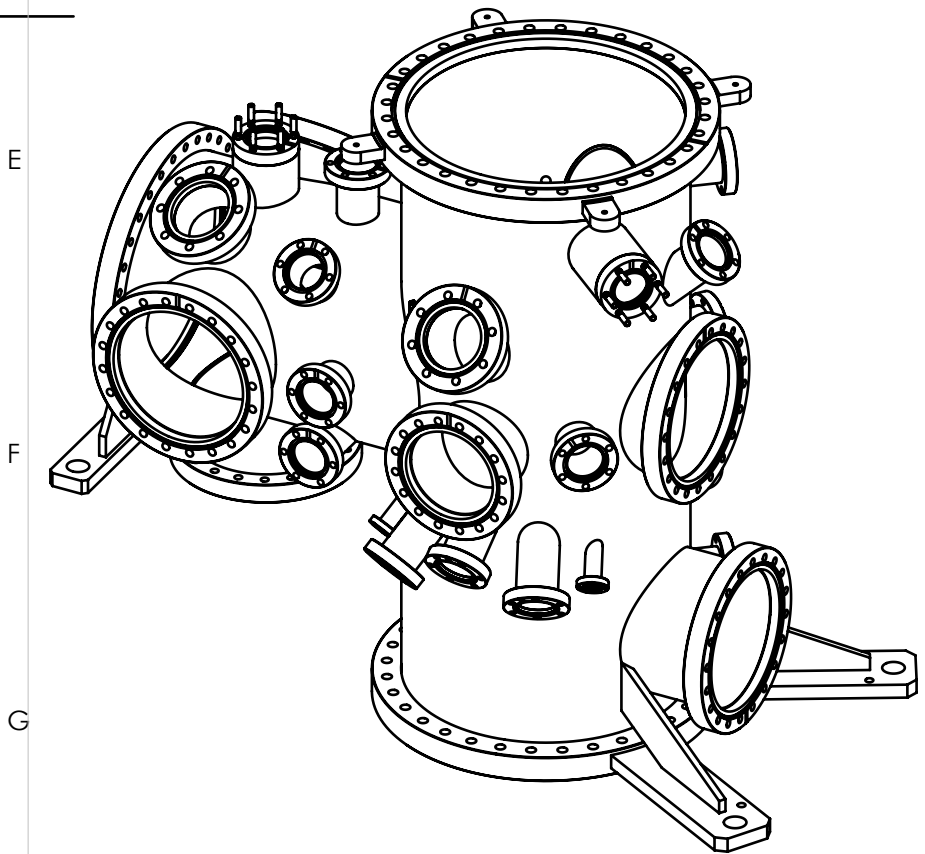
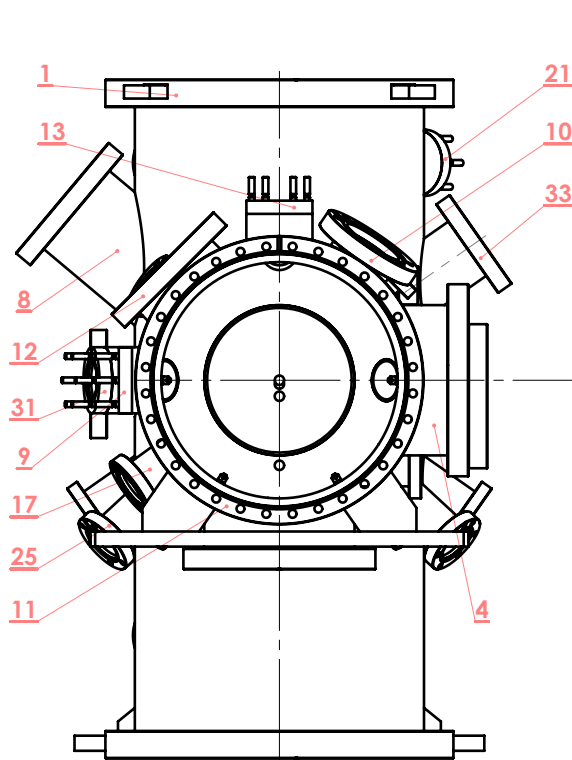
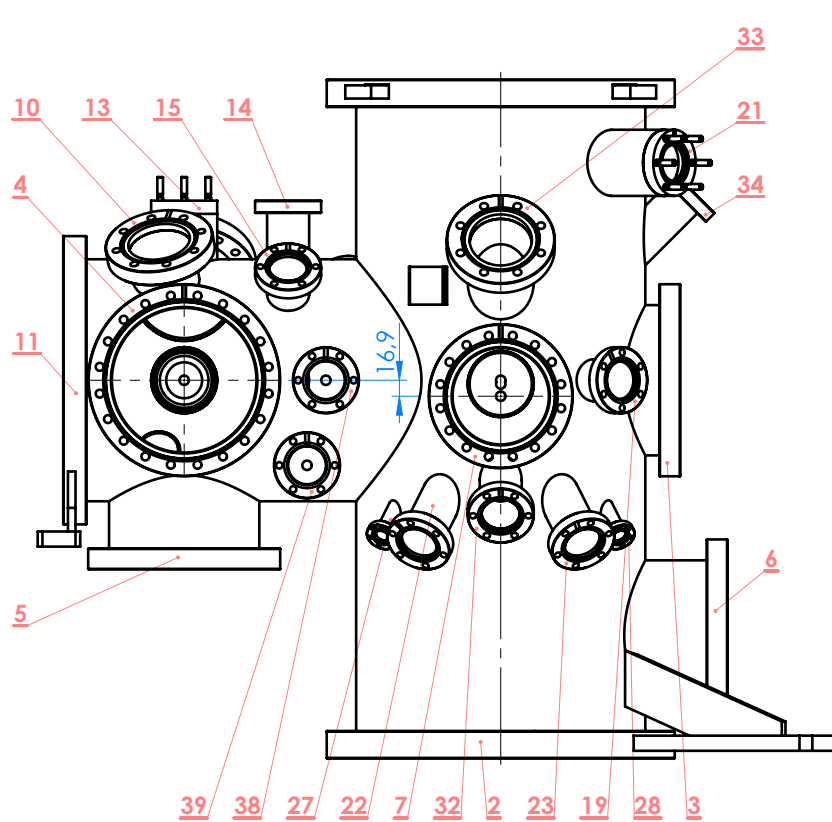
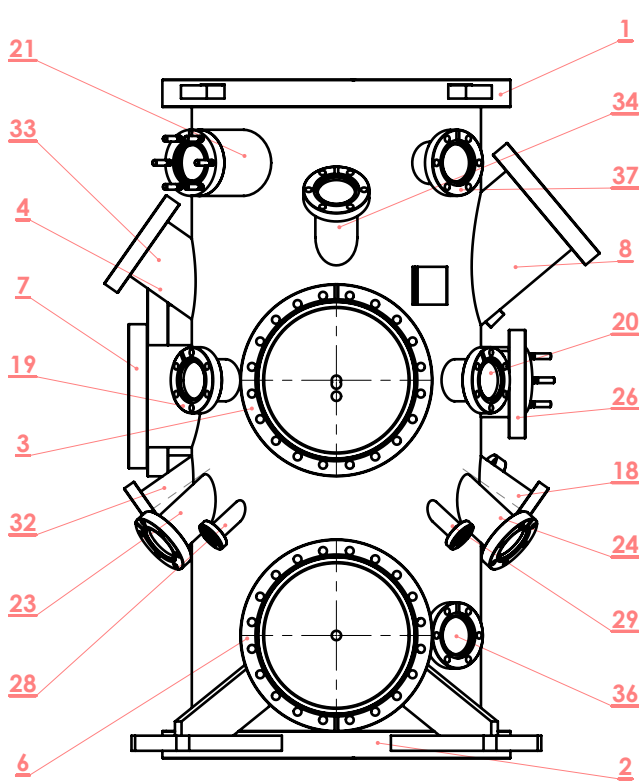
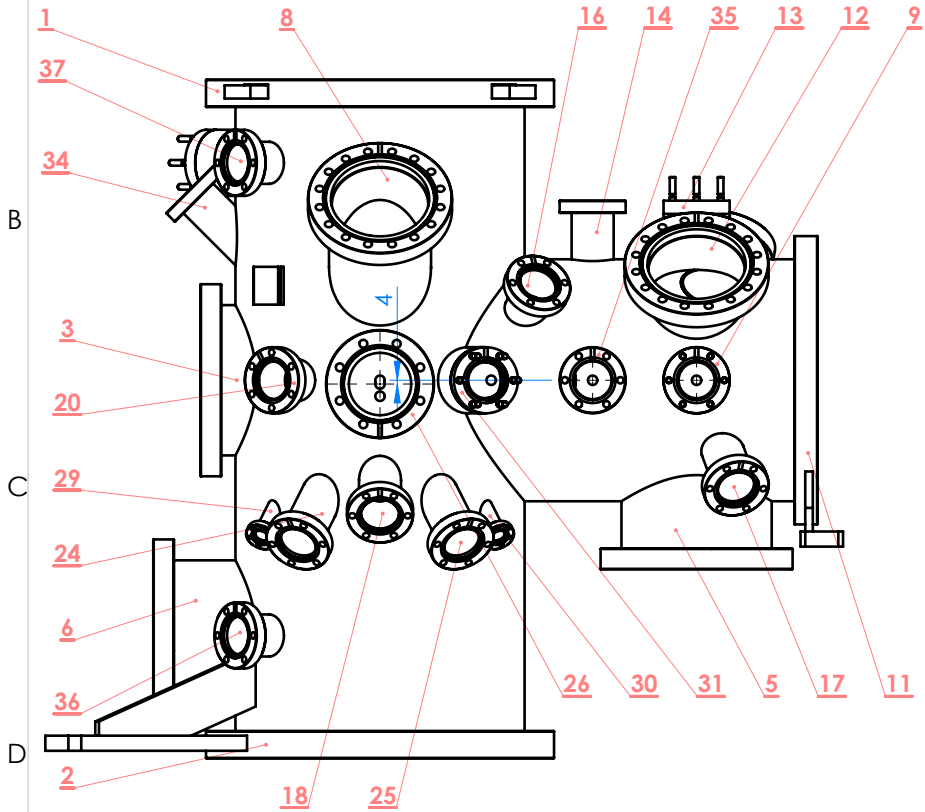
05

Sheet 1 of 2

ATTENTION - STAINLESS STEEL only
Manufacturing and assembling process have to be made without tools, which are using
for regular steel (carbon steel) manufacturing.
Raw material and finished parts have to be store without contact with regular steel.



Ra 0,1 (✓)



ATTENTION:

- Use CF flanges geoemtry according Technical Specification ISO/TS 3669-2
"Vacuum Technology - Bakable Flanges - Dimensions of knife-edge flanges"
- Keep orientation of wholes of non rotatable flanges as it is shown on the drawings
- Leak-proof $<1 \times 10^{-10}$ [mbar x l / s]
- Leak testing with a dry pump system only!

Manufacturing processes and cleanlines must be such that
the component/assembly is supplied suitable for use in UHV systems

PREVAC standard surface finish:
01 wew. - 04 zew.

DIMENSIONS ARE IN MILLIMETERS
General tolerances:
ISO 2768-fH / ISO 13920-AE

+0.3 -0.1
+0.1 -0.3

Responsible M.Tkocz

DRW. Author M.Tkocz 10.03.2016

Checking and approval of the document is in accordance with
given template in the MRP system.

The reproduction, distribution and utilization
of this document as well as the communication
of its contents, to others without explicit
authorization is prohibited.

Old number: -

Title:
Chamber OD306x5 39xCF
PL: Komora OD306x5 39xCF

Material:
-

Weight: 78713.88 [g]
Type of item: PROD



PREVAC sp. z o.o.
ul. Raciborska 61 44362 Rogow
tel. +48 324592000 fax. +48 324592001

A3

Scale: 1:8

Drawing number:

1043466

Revision:

05

Sheet 2 of 2