

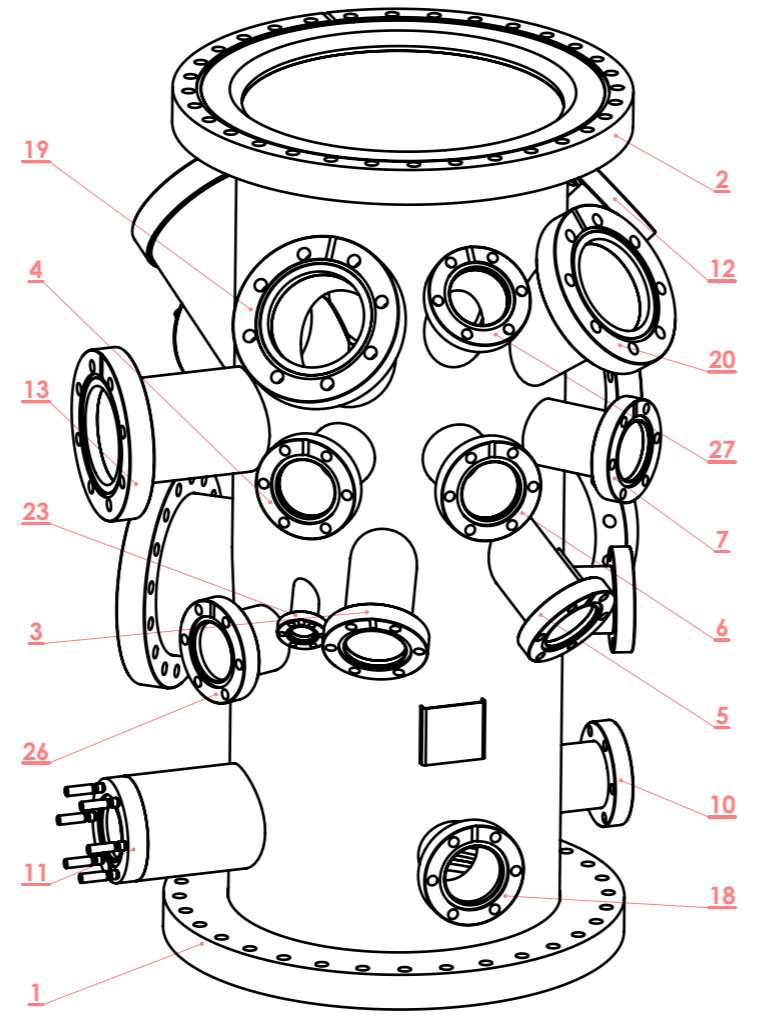
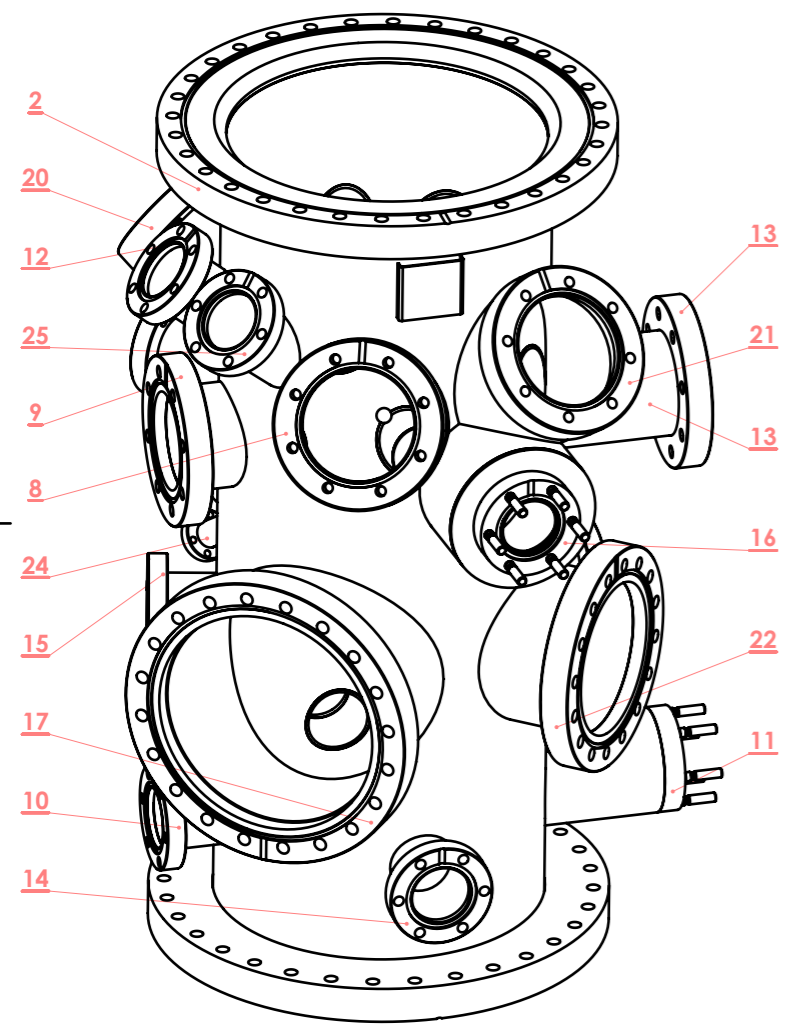
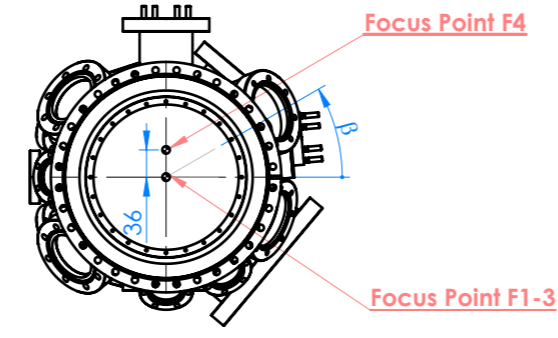
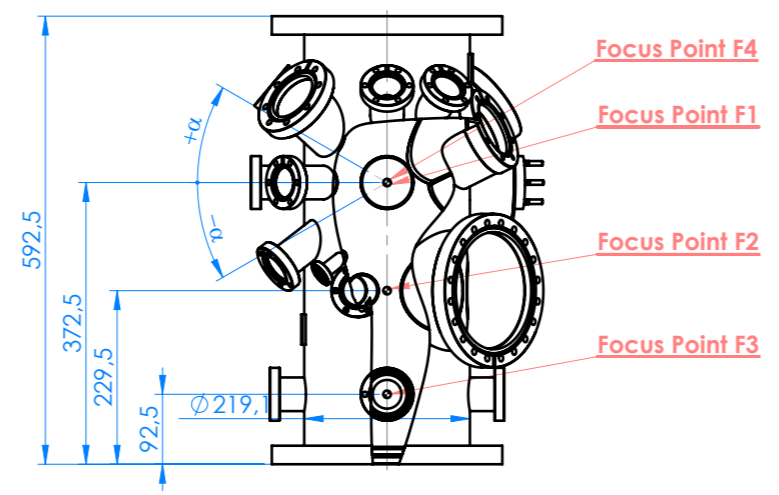
ATTENTION - STAINLESS STEEL only
 Manufacturing and assembling process have to be made without tools, which are using for regular steel (carbon steel) manufacturing.
 Raw material and finished parts have to be store without contact with regular steel.



Ra 1,6 (✓)

ATTENTION:

- Use CF flanges geometry according Technical Specification ISO/TS 3669-2 "Vacuum Technology - Bakable Flanges - Dimensions of knife-edge flanges"
- Keep orientation of wholes of non rotatable flanges as it is shown on the drawings
- Leak-proof <math><1 \times 10^{-10}</math> [mbar x l / s]
- Leak testing with a dry pump system only!

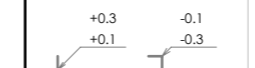


31	Focus Point F4	-	-	-	-	-	-
30	Focus Point F3	-	-	-	-	-	-
29	Focus Point F2	-	-	-	-	-	-
28	Focus Point F1	-	-	-	-	-	-
27	Port DN 40CF - spare	44,5x2	F1	40	180	200	rotatable
26	Port DN 40CF - gas dosing	44,5x2	F2	0	108	155	-
25	Port DN 40CF - spare	44,5x2	F1	40	302	200	-
24	Port DN 16CF - shutter	18x1	-	as port 5	as port 5	-30 to port 5	shift 60mm to port 5
23	Port DN 16CF - shutter	18x1	-	as port 3	as port 3	-30 to port 3	shift 60mm to port 3
22	Port DN 100CF - viewport	108x2	F2	0	50	170	-
21	Port DN 63 CF - viewport	108x3	F4	36	20	185	threaded holes
20	Port DN 63 CF - viewport	70x2	F1	35	220	200	-
19	Port DN 63 CF - viewport	70x2	F1	35	140	200	-
18	Port DN 40CF - residual gas analyser	44,5x2	F3	0	180	155	-
17	Port DN 160CF - leed	159x3	F2	0	45	185	-
16	Port DN 40CF - wobblestick	101.6x3	F4	0	5	180	threaded holes
15	Port DN 40CF - spare	44,5x2	F2	0	255	155	-
14	Port DN 40CF - spare	44,5x2	F3	0	0	155	-
13	Port DN 63 CF - transferring	70x2	F1	0	90	210	-
12	Port DN 40CF - spare	44,5x2	F1	40	270	200	-
11	Port DN 40CF - vacuum gauge	70x2	F3	0	90	200	threaded holes
10	Port DN 40CF - spare	44,5x2	F3	0	270	155	-
9	Port DN 63 CF - quartz balance	70x2	F1	0	270	150	-
8	Port DN 63 CF - viewport	108x3	F1	25	338	170	threaded holes
7	Port DN 40CF - evaporation source	44,5x2	F1	0	220	180	rotatable
6	Port DN 40CF - evaporation source	44,5x2	F1	0	180	180	rotatable
5	Port DN 40CF - evaporation source	44,5x2	F1	-35	205	200	rotatable
4	Port DN 40CF - evaporation source	44,5x2	F1	0	140	180	rotatable
3	Port DN 40CF - evaporation source	44,5x2	F1	-35	155	200	rotatable
2	Port DN 250CF - manipulator	219,1x3	F1	90	-	220	-
1	Port DN 250CF - pumping system	219,1x3	F1	-90	-	372,5	-
No	Port name/description	Tube size	Focus point	Alpha [deg]	Beta [deg]	Lo [mm]	Comment

Manufacturing processes and cleanlines must be such that the component/assembly is supplied suitable for use in UHV systems

PREVAC standard surface finish:
 01 wew. - 04 zew.

DIMENSIONS ARE IN MILLIMETERS
 General tolerances:
 ISO 13920-AE



Responsible L.Musiol

DRW. Author L.Musiol 31.03.2016

Checking and approval of the document is in accordance with given template in the MRP system.

The reproduction, distribution and utilization of this document as well as the communication of its contents, to others without explicit authorization is prohibited.

Old number: -

Title:
 Chamber OD219,1 27xCF
 PL: Komora cylindryczna OD219,1 27xCF

Material:

Weight:
 36534,7 [g]

Type of item:
 PROD



PREVAC sp. z o.o.
 ul. Raciborska 61 44362 Rogow
 tel. +48 324592000 fax. +48 324592001

A3

Scale: 1:5

Drawing number:

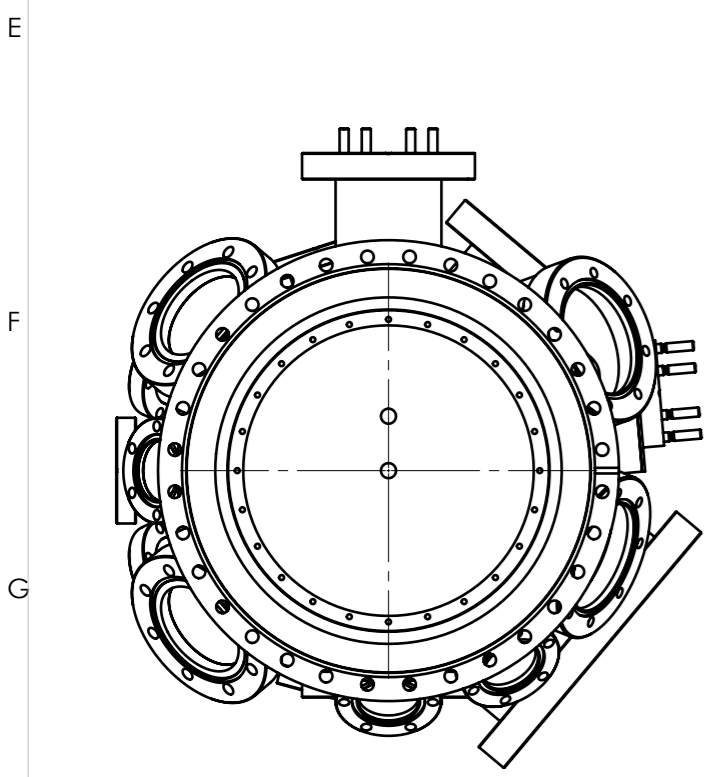
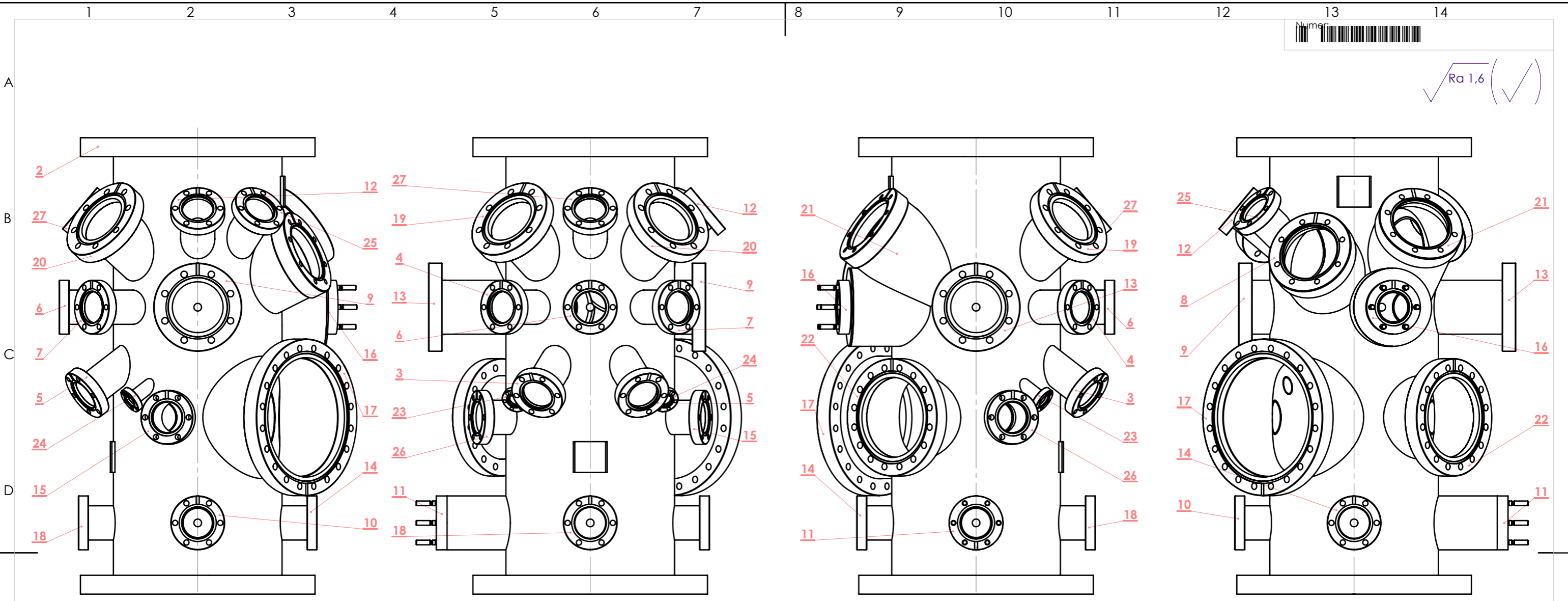
1043392


Revision:

05



Ra 1,6 (✓)



<p>Manufacturing processes and cleanlines must be such that the component/assembly is supplied suitable for use in UHV systems</p> <p>PREVAC standard surface finish: 01 wew. - 04 zew.</p> <p>DIMENSIONS ARE IN MILLIMETERS General tolerances: ISO 13920-AE</p> <p>+0.3 -0.1 +0.1 -0.3</p>		<p>The reproduction, distribution and utilization of this document as well as the communication of its contents, to others without explicit authorization is prohibited.</p> <p>Old number: -</p>		 <p>PREVAC sp. z o.o. ul. Raciborska 61 44362 Rogow tel. +48 324592000 fax. +48 324592001</p>		<p>A3 Scale: 1:5</p>	
<p>Responsible L.Musiol</p>		<p>Title: Chamber OD219,1 27xCF PL: Komora cylindryczna OD219,1 27xCF</p>		<p>Drawing number: 1043392</p>		<p>Revision: 05</p>	
<p>DRW. Author L.Musiol 31.03.2016</p>		<p>Weight: 36534.7 [g]</p>		<p>Type of item: PROD</p>		<p>Sheet 2 of 2</p>	
<p>Checking and approval of the document is in accordance with given template in the MRP system.</p>							